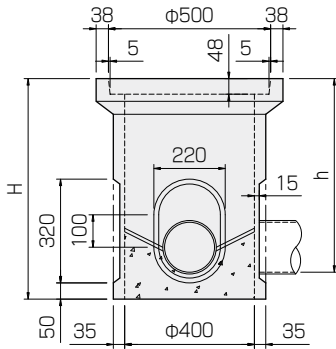
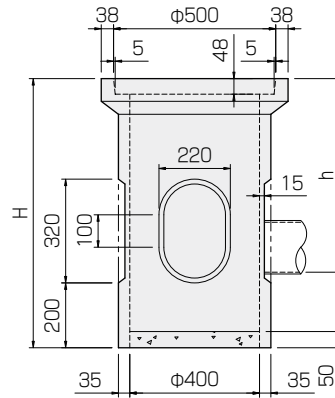


汚水桧(SA型)



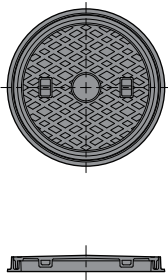
雨水桧(RA型)



呼び	寸法(mm)		参考重量(kg)
	H	h	
SA-101	480	286~404	65
SA-102	580	386~504	77
SA-103	680	486~604	89

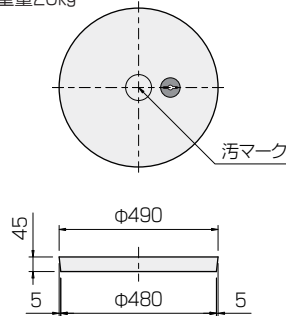
呼び	寸法(mm)		参考重量(kg)
	H	h	
RA-101	630	286~404	83
RA-102	730	386~504	95
RA-103	830	486~604	108

鉄蓋



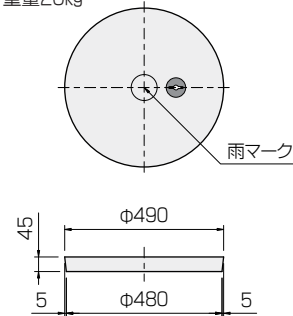
汚水桧蓋

参考重量20kg



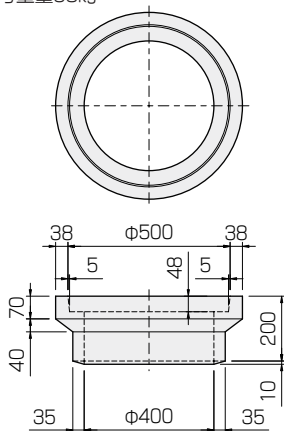
雨水桧蓋

参考重量20kg



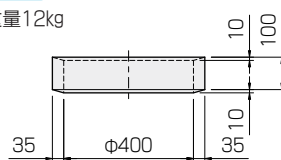
側塊A

参考重量38kg



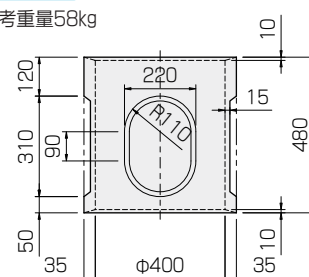
側塊C

参考重量12kg



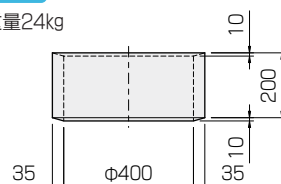
側塊B

参考重量58kg

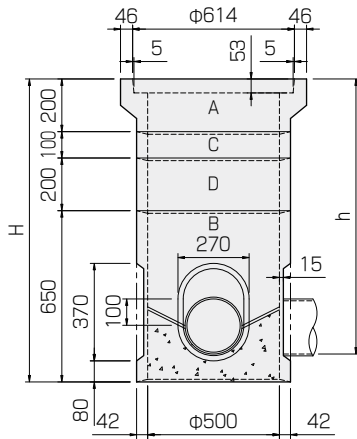


側塊D

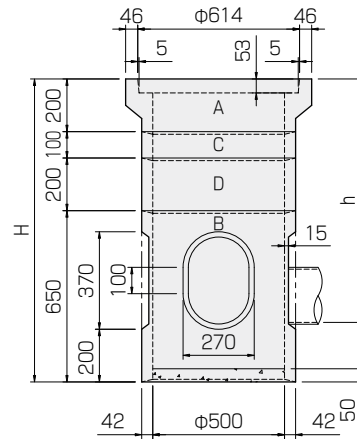
参考重量24kg



汚水桧(SB型)



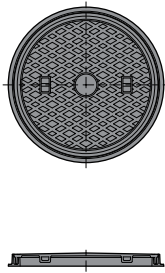
雨水桧(RB型)



呼び	組合せ	寸法(mm)	
		H	h
SB-101	A+B	850	576~744
SB-102	A+B+C	950	676~844
SB-103	A+B+D	1050	776~944
SB-104	A+B+C+D	1150	876~1044
SB-105	A+B+2D	1250	976~1144
SB-106	A+B+C+2D	1350	1076~1244

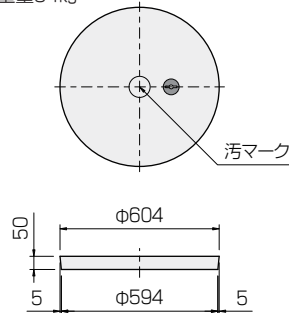
呼び	組合せ	寸法(mm)	
		H	h
RB-101	A+B	850	456~624
RB-102	A+B+C	950	556~724
RB-103	A+B+D	1050	656~824
RB-104	A+B+C+D	1150	756~924
RB-105	A+B+2D	1250	856~1024
RB-106	A+B+C+2D	1350	956~1124
RB-107	A+B+3D	1450	1056~1224

鉄蓋



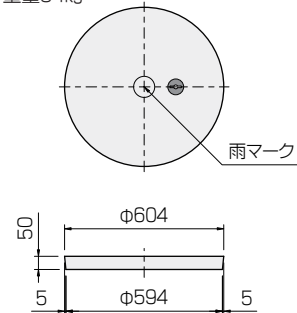
汚水桧蓋

参考重量34kg



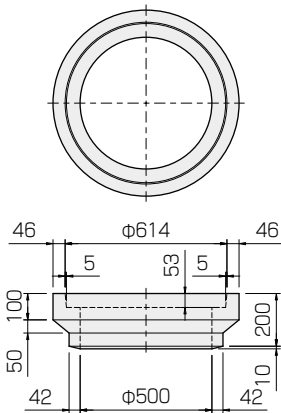
雨水桧蓋

参考重量34kg



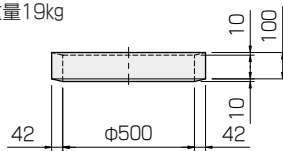
側塊A

参考重量64kg



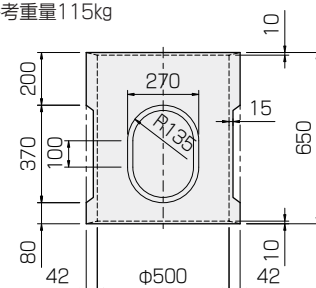
側塊C

参考重量19kg



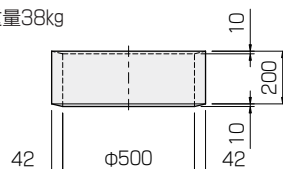
側塊B

参考重量115kg

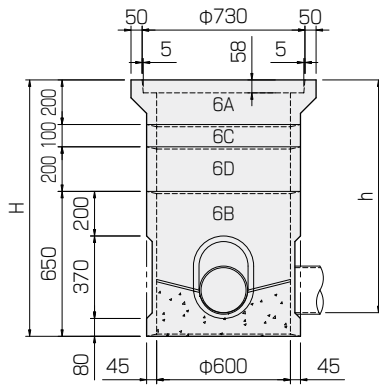


側塊D

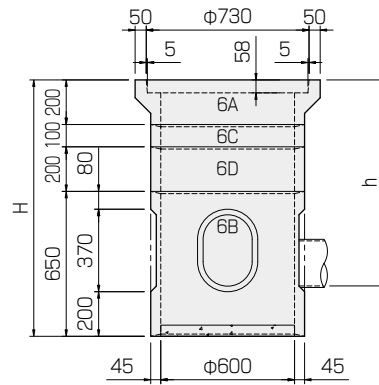
参考重量38kg



汚水柵(SC型)



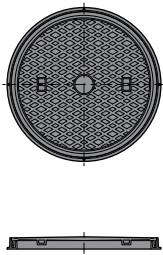
雨水柵(RC型)



呼び	組合せ	寸法(mm)	
		H	h
SC-101	6A+6B	850	576~744
SC-102	6A+6B+6C	950	676~844
SC-103	6A+6B+6D	1050	776~944
SC-104	6A+6B+6C+6D	1150	876~1044
SC-105	6A+6B+6E	1250	976~1144
SC-106	6A+6B+6C+6E	1350	1076~1244

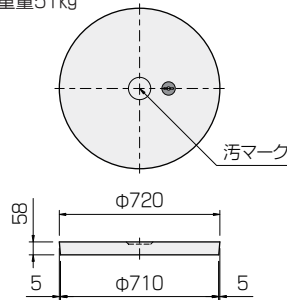
呼び	組合せ	寸法(mm)	
		H	h
RC-101	6A+6B	850	456~624
RC-102	6A+6B+6C	950	556~724
RC-103	6A+6B+6D	1050	656~824
RC-104	6A+6B+6C+6D	1150	756~924
RC-105	6A+6B+6E	1250	856~1024
RC-106	6A+6B+6C+6E	1350	956~1124
RC-107	6A+6B+6D+6E	1450	1056~1224

鉄蓋



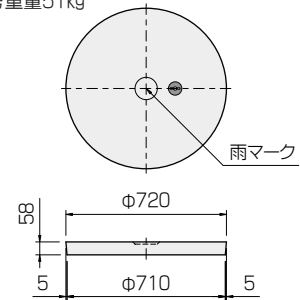
汚水柵蓋

参考重量51kg



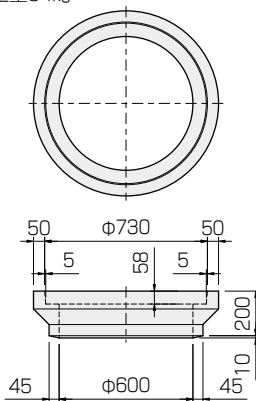
雨水柵蓋

参考重量51kg



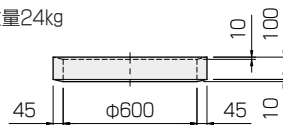
側塊6A

参考重量84kg



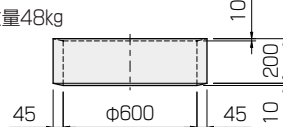
側塊6C

参考重量24kg



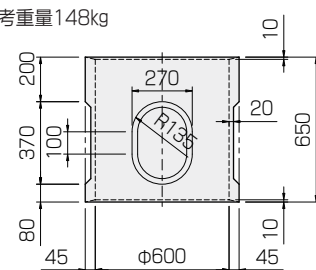
側塊6D

参考重量48kg



側塊6B

参考重量148kg



側塊6E

参考重量96kg

