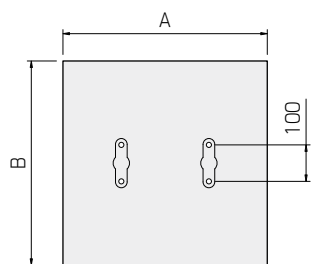
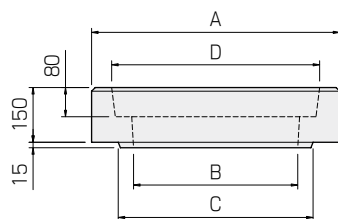
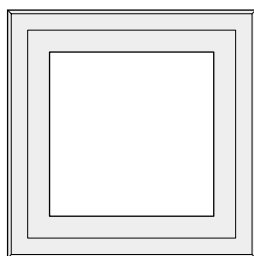


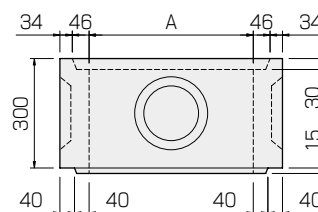
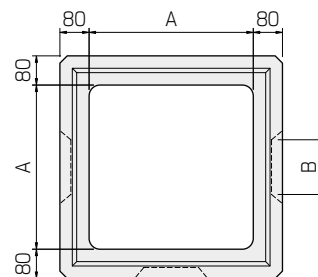
蓋



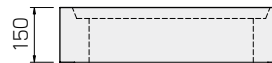
縁塊



側塊



側塊 (調整用)



呼び	寸法(mm)				参考重量(kg)	
	A	B	C	D		
蓋	360	450	450	80	100	32
	450	550	560	80	100	47
	600	700	700	80	100	80
縁塊	360	580	360	440	—	53
	450	680	450	530	—	61
	600	830	600	680	—	82
側塊	360	360	100	—	—	98
	450	450	150	—	—	115
	600	600	200	—	—	148
底板塊	360	620	340	—	—	73
	450	710	430	—	—	96
	600	860	580	—	—	142

底板塊

